

User guide

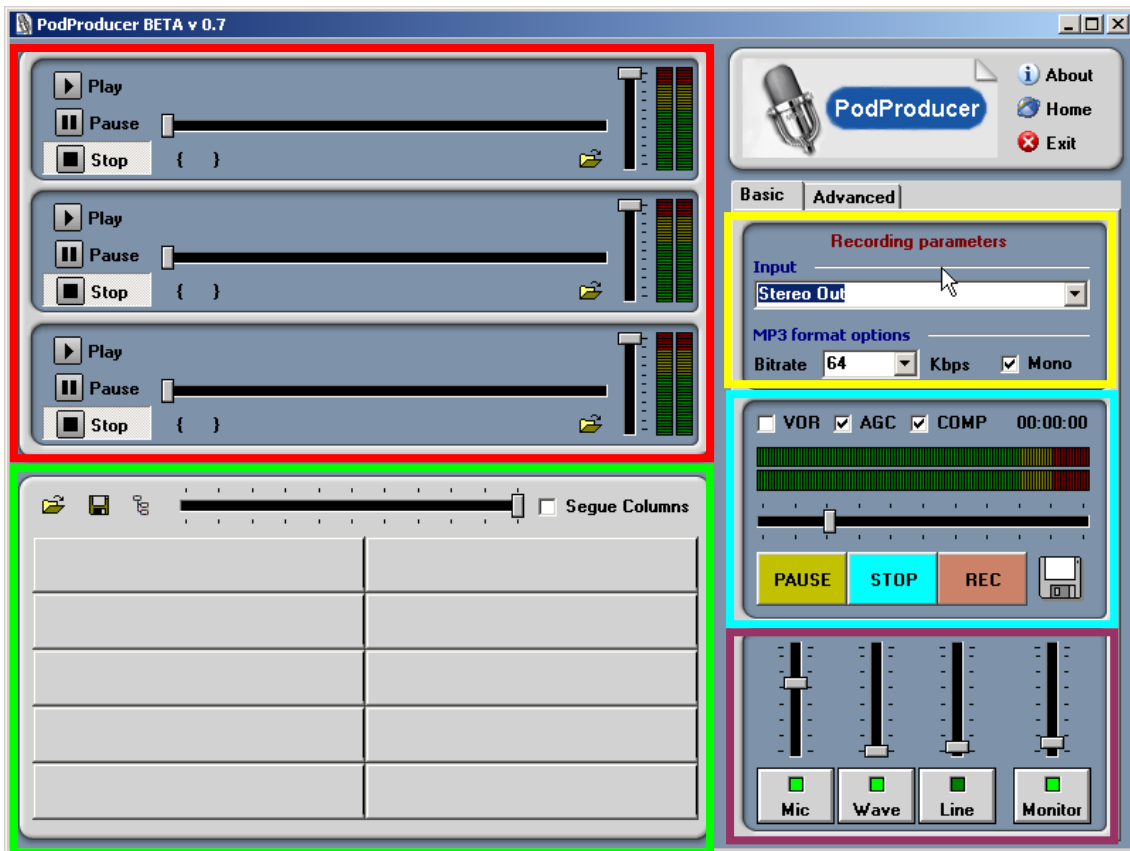


Table of contents

Table of contents	2
Main screen.....	4
Playing Decks	4
Instant play buttons.....	4
Recording parameters	4
Recording controls.....	4
Mixer	4
Recording parameters	5
Input.....	5
MP3 format options	5
Recording controls.....	6
Voice Operated Recording	6
Automatic Gain Controller	6
Compressor.....	6
Recording time	6
Pause.....	6
Stop.....	6
Record.....	7
Save recording	7
Mixer	8
Advance Controls	9
Compressor.....	9
Threshold.....	9
Ratio	9
Attack	9
Release.....	9
Gain	9
Automatic Gain Controller	10
Target.....	10
Quiet	10
Rate.....	10
Gain	10
Voice Operated Recording	11
Playing decks.....	12
Assigning a file.....	13
IN and OUT cue	14
Playing controls	14
Volume	14
Instant play buttons.....	15
Open	15
Save	16
File tree window	17
Volume level	17
Segue columns.....	17
F Keys.....	18
Shortcut Keys	19
Main Playing decks	19
Recording Controls.....	19

Mixer	19
Instant Play Buttons.....	19

Main screen



Playing Decks

The system provides three playing decks, each with an independent volume control and play, pause and stop buttons.

Instant play buttons

There are ten instant play buttons; each one can play a different audio at the same time.

Recording parameters

By changing these parameters you can select the recording input, the MP3 bit rate and either mono or stereo.

Recording controls

With these controls you can activate the functions “Voice Operated Recording”, “Automatic Gain Controller”, regulate the input level and start, stop, pause and save your recording.

Mixer

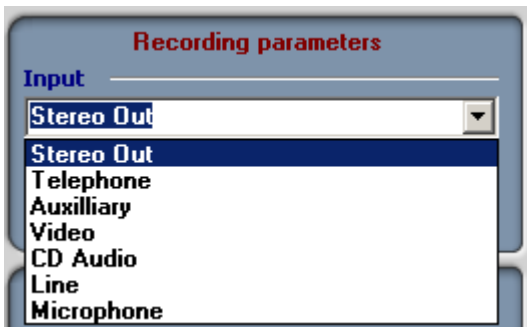
The mixer allows you to activate, deactivate or modify the level of the microphone, wave, line and monitor channels.

Recording parameters

Input

The input defines the channel of the sound card that we want to record from, unfortunately each sound card manufacturer names the channels differently so it's impossible to detect the correct channel automatically.

In the screen shot the correct input is "Stereo Out", other possible channel names includes "What you hear" and "Stereo Mix".



MP3 format options

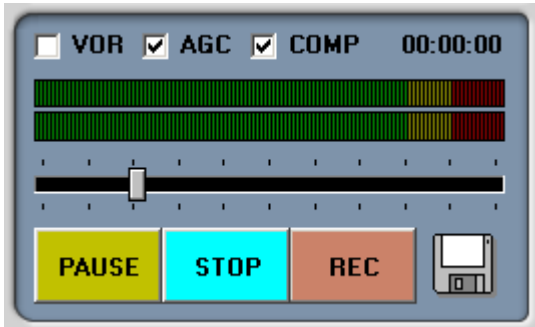
You can change these options to define the quality and file size of the final recording.

A bit rate of 64 Kbps produces an archive of 28 Megabytes for each hour of recording.

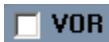
The Mono check box tells the system to produce a mono or stereo recording.



Recording controls

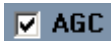


Voice Operated Recording



When this checkbox is activated the recording begins automatically when the input level reaches a predefined threshold.

Automatic Gain Controller



Automatically changes the signal level to maintain a uniform sound level.

Compressor

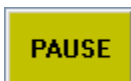


Recording time



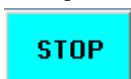
Shows the actual recording time in hours, minutes and seconds.

Pause



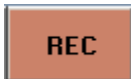
Pauses or restarts the recording.

Stop



Stops the recording.

Record



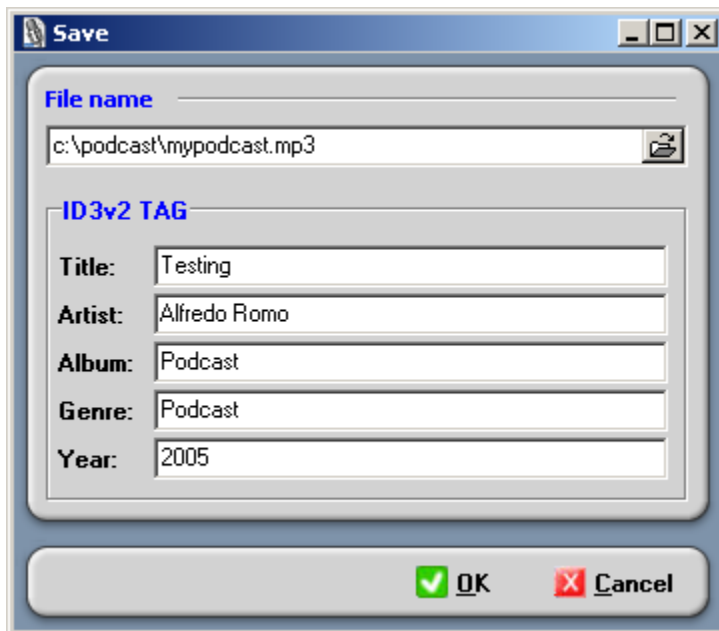
Starts the recording.

Save recording



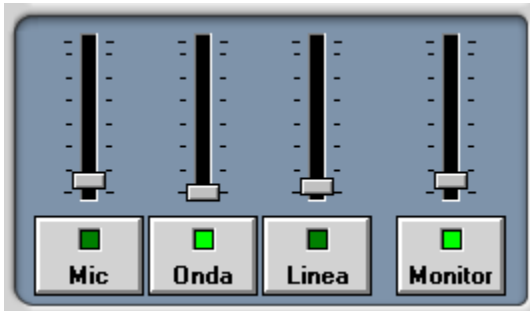
Saves the recording to disk.

When you press this button the following windows appears.



In this window you define the file name, and optionally the ID3 Tag properties.

Mixer



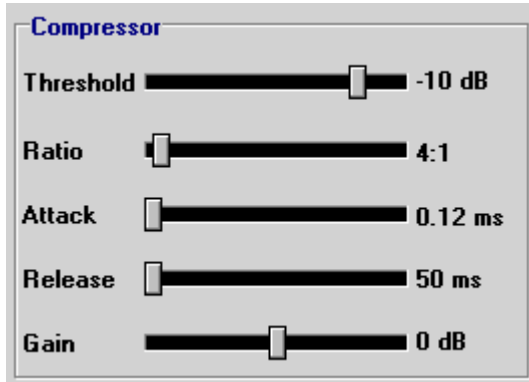
With these controls you can modify the input levels of the microphone, wave, line and monitor channels.

Clicking each button activates or deactivates the corresponding channel.

Advance Controls

These controls allows you to modify the compressor, automatic gain controller and voice operated recording parameters.

Compressor



Threshold

Point at which compression begins, in decibels, in the range from -60 to 0.

Ratio

Compression ratio, in the range from 1 to 100.

Attack

Time, in milliseconds, before compression reaches its full value, in the range from 0.01 to 500.

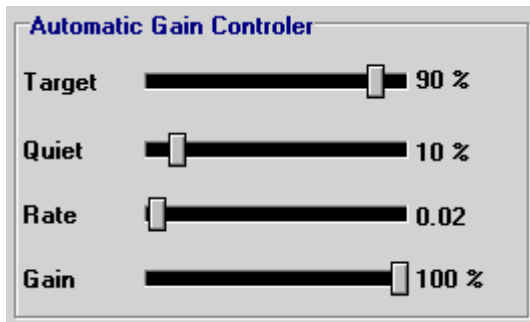
Release

Time, in milliseconds, at which compression is stopped after input drops below threshold, in the range from 50 to 3000.

Gain

Output gain of signal after compression, in the range from -60 to 60 decibels.

Automatic Gain Controller



Target

The target volume level.

Quiet

The quiet volume level.

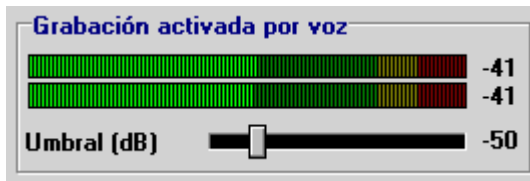
Rate

Amplification adjustment rate.

Gain

Amplification level.

Voice Operated Recording

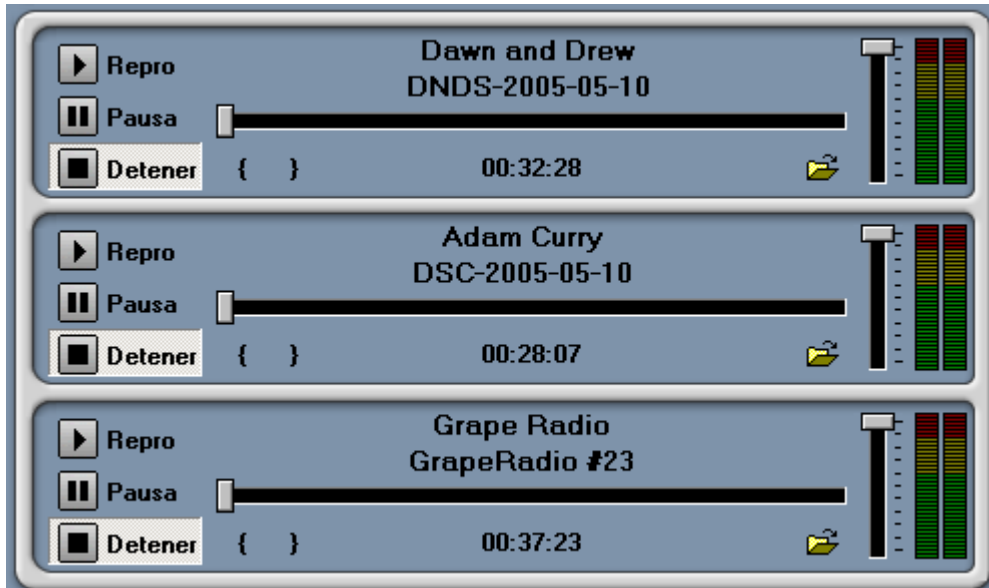


To define the VOR threshold:


- 1- In the mixer activate the MIC channel and adjust the recording level.
- 2- While in silence double click on any of the level meters, the current audio level will be displayed.
- 3- Take a look at the peak levels at the right of the level meters.
- 4- Move the track bar to a value that is above the peak level displayed.

Playing decks

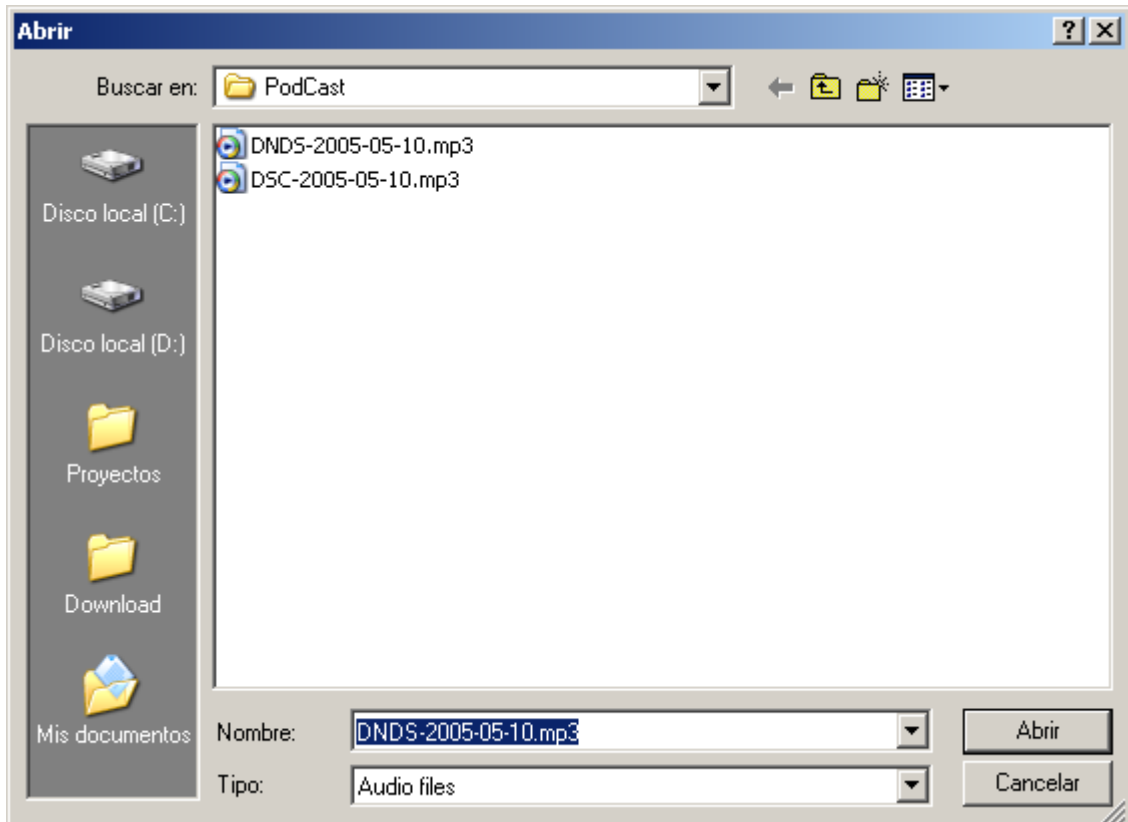
The system has three playing decks; each can have a different audio assigned.



Assigning a file

To assign a file press the open button  that corresponds to the deck you want to assign.

When you press the button a open dialog form is displayed, select the file that you want to assign and press “Open”.



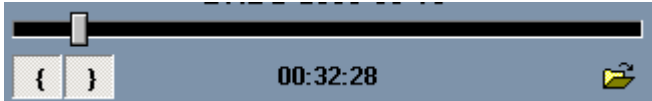
The file will be assigned to the playing deck.



To assign a different file repeat the preceding steps.

IN and OUT cue

With these buttons { } you can define the locations where the reproduction will start and stop.



To define the IN and OUT cue points:

Move the track bar to the position where you want the audio to start and click on the IN cue button “{”, to set the OUT cue move the track bar to the position when you want the audio to stop and click the OUT cue button “}”.

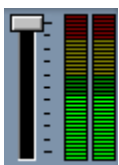
Playing controls

With these controls you can start, pause and stop the playing.



Volume

Moving the track bar up increases the volume, moving it down decreases the volume.



Instant play buttons

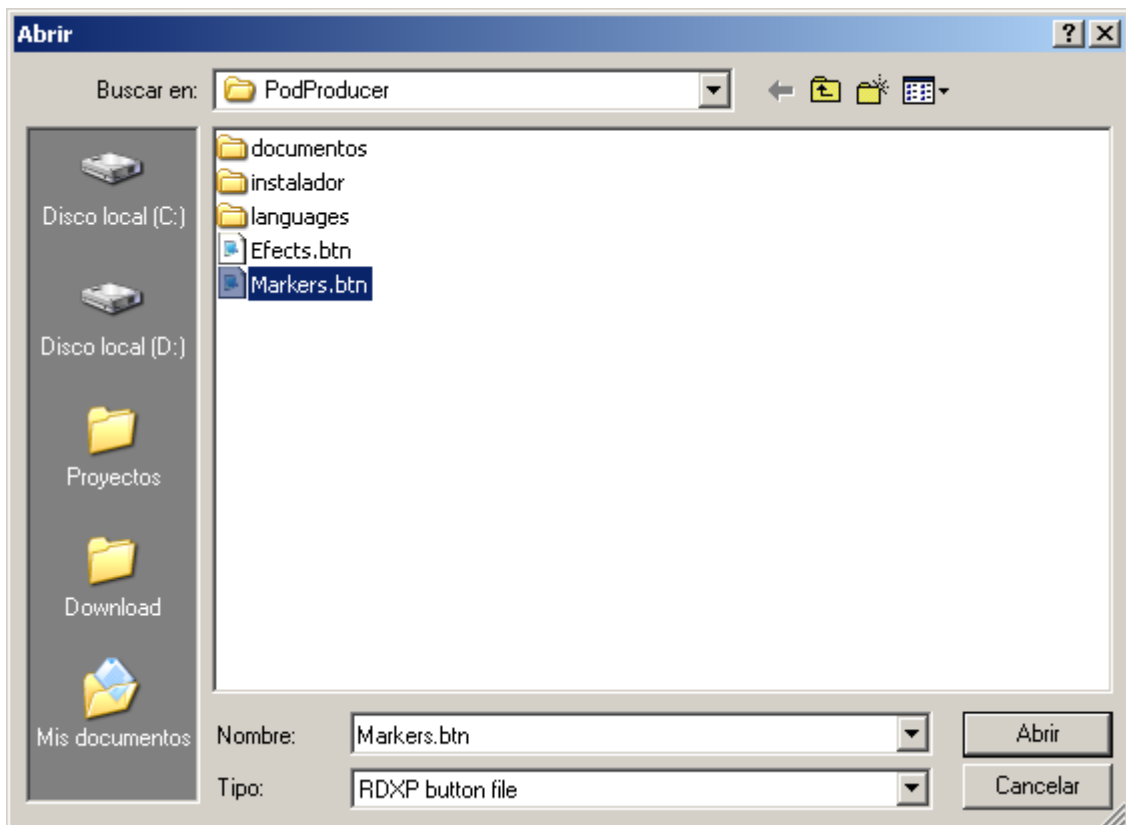


Open



Opens a saved configuration.

When you press the button, an open dialog is displayed where you select the desired saved configuration and press the “Open” button.

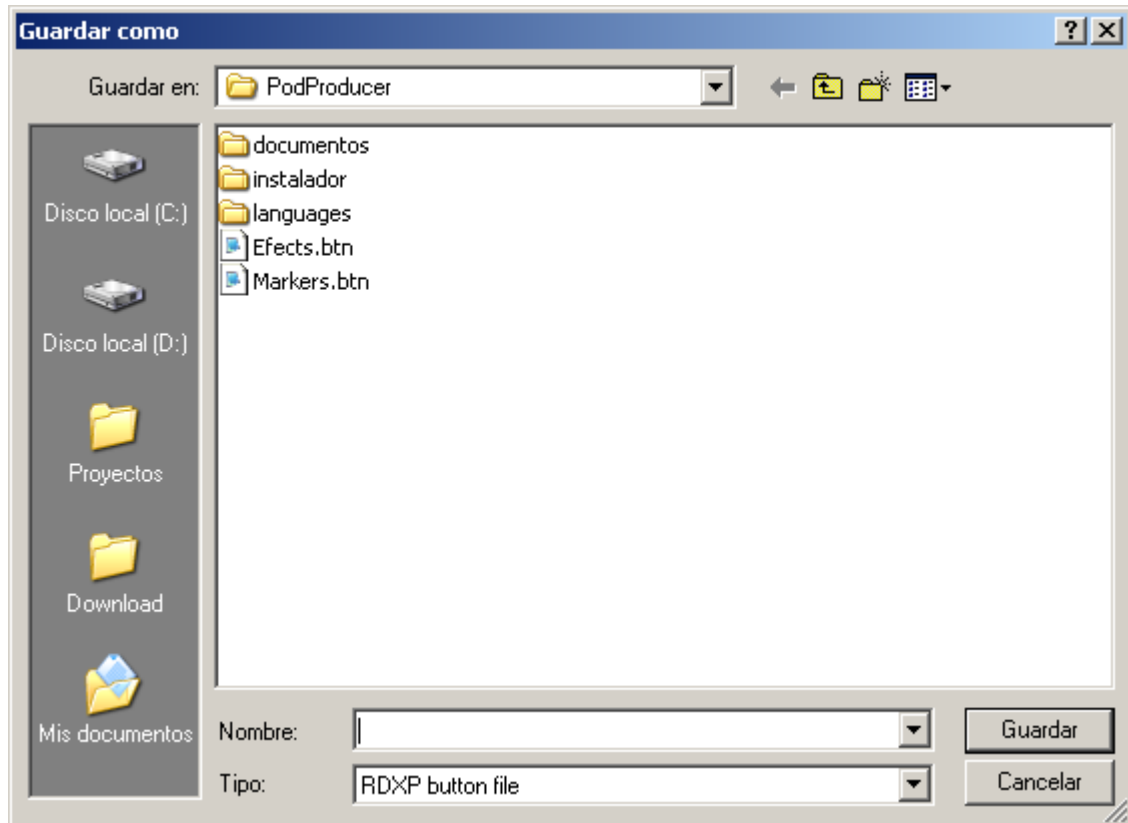


Save



Saves the current buttons configuration to disk.

When you press this button, the save dialog is displayed, type the name of the file and press the “Save” button.

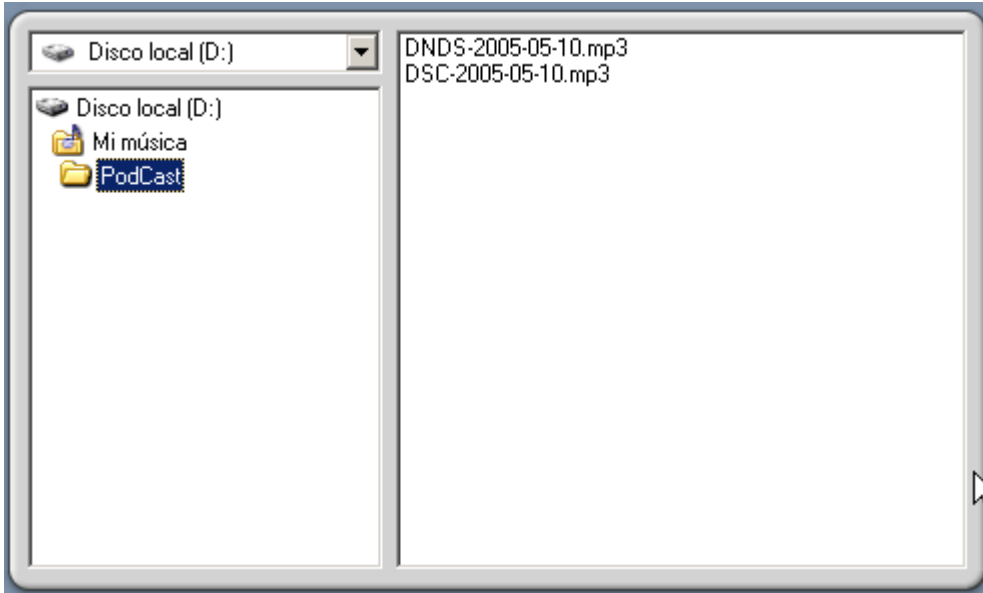


File tree window



When this button is pressed the file tree window appears.

To assign a file to a button just drag it from the file tree window and drop it in the desired button.

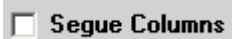


Volume level



Moving the track bar to the right increases the output level of all the buttons, moving it to the left decreases the sound level.

Segue columns



When this check box is activated the buttons on a single column plays one after the other from the first pressed button down to the last assigned.

	XTREMA 92.9 MARKER EN FRIO
	XTREMA 92.9 MARKER 2
	XTREMA 92.9 MARKER 3

F Keys

You can use the F keys to start or stop any of the instant play buttons.



Shortcut Keys

Main Playing decks

ALT + 1	Main playing deck 1 Play
ALT + 2	Main playing deck 1 Pause
ALT + 3	Main playing deck 1 Stop
ALT + 4	Main playing deck 2 Play
ALT + 5	Main playing deck 2 Pause
ALT + 6	Main playing deck 2 Stop
ALT + 7	Main playing deck 3 Play
ALT + 8	Main playing deck 3 Pause
ALT + 9	Main playing deck 3 Stop

Recording Controls

ALT + P	Pauses recording
ALT + S	Stops recording
ALT + R	Starts recording
ALT + Right arrow	Increase Recording level
ALT + Left arrow	Decrease Recording level

Mixer

ALT + M	Activates/deactivates Microphone
ALT + W	Activates/deactivates Wave
ALT + L	Activates/deactivates Line In
ALT + N	Activates/deactivates Monitor
SHIFT + Up arrow	Increase Mic level
SHIFT + Down arrow	Decrease Mic level
CTRL + Up arrow	Increase Wave level
CTRL + Down arrow	Decrease Wave level
ALT + Up arrow	Increase Line In level
ALT + Down arrow	Decrease Line In level
Up arrow	Increase Monitor level
Down arrow	Decrease Monitor level

Instant Play Buttons

F1 .. F11	Instant play buttons
F12	Toggles Recording and Notes
ALT + F12	Show notes and adds current recording time